

FEATURES

Caratteristiche

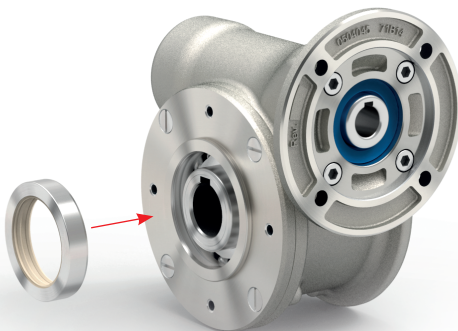
Hygienic design Aluminum worm gearboxes

Riduttori a vite senza fine in alluminio

Type <i>Tipo</i>	Torque <i>Coppia</i>	Center distance <i>Interasse</i>	Input power <i>Potenza in entrata</i>	Hollow output shaft <i>Albero cavo in uscita</i>
Z30	21 Nm	30 mm	0.09 ÷ 0.18 kW	ø14 mm
Z45	41 Nm	45 mm	0.09 ÷ 0.37 kW	ø18 mm
Z50	72 Nm	50 mm	0.12 ÷ 0.75 kW	ø25 mm
Z63	147 Nm	63 mm	0.37 ÷ 1.8 kW	ø25 mm
Z85	347 Nm	85 mm	0.55 ÷ 4.0 kW	ø35 mm



This product is:



Twin viton seals with stainless steel shield.

Anelli di tenuta in viton con schermo protettivo in acciaio inox.

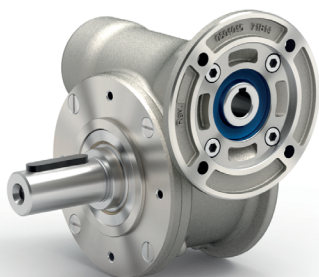


NTT™ stands for a special surface treatment which results in modified external properties of the mechanical parts with complex geometry. NTT™ treatment does not imply any kind of substance being applied on the surface.

NTT™ è uno speciale trattamento che come risultato ha la modifica delle proprietà superficiali delle parti meccaniche con geometria complessa.
Il trattamento NTT™ non implica l'applicazione di nessun tipo di sostanza sulla superficie.

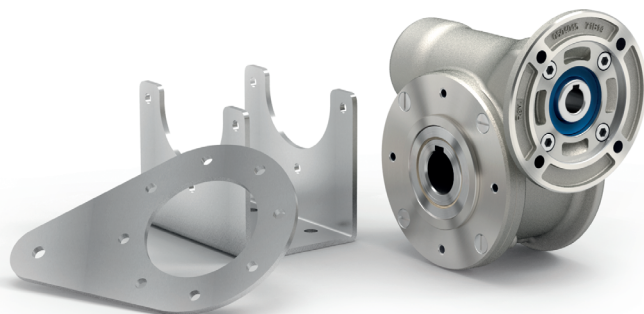
FEATURES

Caratteristiche



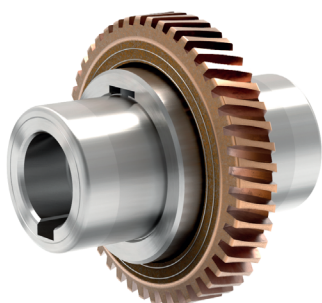
Output shaft and hollow shaft in AISI 316L.

Mozzo e albero in uscita in AISI 316L.



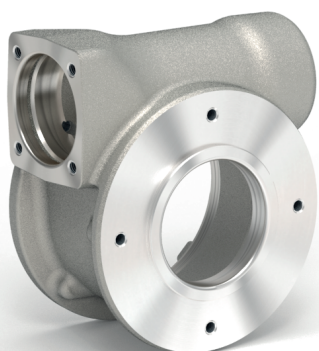
All stainless steel hardware.

Viteria in acciaio inox.



Nickel bronze worm gears CuSn12Ni (C91700) is centrifugally cast onto an iron hub for maximum strength and superior life.

Mozzo/corona in bronzo al Nickel CuSn12Ni (C91700) centrifugato; mozzo in acciaio per massima resistenza e durata superiore.



Housing with special smooth surfaces.

Cassa con finitura speciale liscia.